



SS San Fernando [+1940]

Details

general

nationality: [british](#)
 purpose: [transport](#)
 type: [tanker](#)
 propulsion: [steamer](#)
 date built: 1919
 status: [live](#) **++**

details

weight (tons): 13056 grt
 dimensions: 168,2 x 21 x 12,8 m
 engine: 3 steam [turbines](#) geared to 1 screwshaft
 power: 958 n.h.p.
 speed: 10 knots

about the loss

cause lost: [torpedo](#)
 date lost: [21/06/1940](#) [dd/mm/yyyy]
 casualties:

about people

builder:  [Armstrong W. G. & Whitworth Co. Ltd., Newcastle-Upon-Tyne](#)
 owner:  [Eagle Oil & Shipping Co. Ltd., London](#)
 captain:

about the wreck

depth: 150 max. / -- min. (m)
 orientation:
 protected:
 war grave:


updates

entered by: [Allen Tony](#)
 entered: 29/08/2006
 last update: [Vleggeert Nicó](#)
 last update: 29/09/2009

Position

[Letzens Jan](#) 01/10/2009

latitude: [Only for Hydrographic service subscribers.](#)
 longitude: [Only for Hydrographic service subscribers.](#)
 system: WGS84
 division: 1'=1000
 accuracy: approx. 100m~1km
 remarks: Quality: Unreliable
 ref. used: [UK Hydrographic Office](#)

 [add position to my marks](#)

show neighbour. wrecks: [members only](#)
[check AIS](#)

[insert new position](#)

The Wreck today

~~THE WRECK TODAY~~

[Letzens Jan](#) 01/10/2009

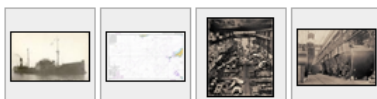
[Only for Hydrographic service subscribers.](#)
 ref. used: [UK Hydrographic Office](#)

[insert wrecksite info](#)

Pictures



[Claes Johnny](#) 21/06/2008
[San Fernando](#)
 ref. used: [www.uboa.net](#)



[insert new picture](#)

Hydrographic Service UK

WRECK REPORT

HYDROGRAPHIC SERVICE
FOR THE UK

DATABASE

WRECK REPORT

LIVE

The wrecksite has been derived in part from material obtained from the [UK Hydrographic Office](#) with the permission of the UK Hydrographic Office and Her Majesty's Stationery Office and the following authorities.
 © British Crown Copyright, 2008.

History

[Allen Tony](#) 26/06/2007

San Fernando was a British steam tanker of 13,056 tons which was built in 1919 and owned by EAGLE OIL & SHIPPING CO LTD. On the 21st June 1940 when on route from CURACAO for LIVERPOOL carrying a cargo 13,500 tons of fuel oil she was torpedoed by U-47. 49 crew saved.

[Letzens Jan](#) 01/10/2009

[Only for Hydrographic service subscribers.](#)
 ref. used: [UK Hydrographic Office](#)

[insert new history](#)

Documents

[insert new document](#)

About Owner(s)



[Eagle Oil & Shipping Co. Ltd., London](#)
 Eagle Oil and Shipping Co. was merged into Shell International Petroleum Company in 1959.

About Builder(s)



[Armstrong W. G. & Whitworth Co. Ltd., Newcastle-Upon-Tyne](#)
 The company was a major British manufacturing company of the early years of the 20th century. Armstrong Whitworth engaged in the construction of armaments, ships, locomotives, automobiles, and aircraft.



LAT: 52°08,6XXN LON: 8°33,6XXW

